



**Scafftec**  
SCAFFOLDING & FORMWORK

**COMPANY PROFILE**

## MISSION STATEMENT

We are committed to delivering exceptional service, innovative designs, and safe practices that meet industry standards, while exceeding our clients' expectations and contributing to the successful completion of their projects.



## VISION STATEMENT

To be the leading contractor recognized for safety, innovation, and excellence in the construction industry. We strive to set new benchmarks in service delivery, promote a safety-first culture, and expand our reach to support complex projects worldwide, all while fostering long-term relationships with our clients and partners.





# MARKET SECTORS



## Oil & Gas

Upstream, Midstream & Downstream

- Liquefied Natural Gas (LNG) Plants
- Refineries
- Offshore & Onshore



## Civil & Infrastructure

Transportation, Water Resources & Large Venues

- Bridges
- Railroads
- Tunnels
- Airports
- Water & Sewage
- Capital Projects



## Commercial Construction

New Construction, Renovation & Maintenance

- High-Rise Buildings
- Residential
- Hotels & Retail
- Stadiums & Arenas
- Commercial
- General Construction



## Power Generation

Traditional & Renewable

- Nuclear Powerplants
- Hydroelectric Plants
- Solar Farms
- Electrical Substations

# QHSE COMPLIANCE



## Health and Safety Policy

Our Health and Safety Policy help us preserve the best possible work conditions for our employees. Every employee has a right to feel safe at work. Our company is committed to following legal standards and create a hazard-free workplace.



## Environment Policy

ScaffteC is fully committed to protect the Environment on each of its operations by setting Environmental objectives that will continually improve the manner in which we approach our various projects/services.



## Quality Control

ScaffteC is committed to delivering quality construction work with promised amenities, which meets and exceeds the needs & expectation of our clients. We promise our valued client's commitment to excellence in each activity, by each employee in the organization, by adopting innovative and best in class engineering and management practices.





# OUR CERTIFICATIONS

---



# OUR SERVICES

---

- ✔ Scaffolding Rental
- ✔ Formwork Rental
- ✔ Contract Scaffolding
- ✔ Engineering Services
- ✔ Plant & Machinery Rental





# SCAFFOLDING RENTAL

---

## ScaffteC Cuplok

ScaffteC Cuplok stands out for its innovative node point connection, enabling the secure connection of up to four components in a single, quick fastening action. This multi-purpose steel system scaffold is designed for both general access and shoring applications, making it versatile and efficient for various construction needs. ScaffteC Cuplok is perfectly suited for an array of applications, including continuous façades, circular scaffolds, birdcage access, and staircase access. It is frequently utilized in renovation, façade, and masonry scaffolding, as well as in support and staircase towers. Additionally, it proves valuable in specialized sectors such as shipbuilding. Each component is manufactured in compliance with industry standards to ensure safety and reliability.





# SCAFFOLDING RENTAL

## ScaffteC Ringlok

ScaffteC Ringlok System features an innovative 8-connection node, ideal for constructing complex-shaped, temporary structures with remarkable efficiency in both assembly and dismantling. Renowned for its rapid assembly, exceptional modularity, adaptability, and high load-bearing capacity, the ScaffteC Ringlok system is one of the most flexible scaffolding solutions available. Its wide range of components and solutions enables the creation of structures that meet all design and load capacity requirements, even in the most demanding conditions. This system is versatile enough for use in maintenance and construction across various sectors, including construction, renovation, infrastructure, and the Oil & Gas industry. All components are manufactured in adherence to relevant industry standards, ensuring safety and reliability.





# SCAFFOLDING RENTAL

---

## ScaffteC Tube & Fitting

ScaffteC Tubes are crafted using galvanized tubes with a 4.0mm thickness, adhering to the European Standard EN39 and OSHA guidelines to ensure durability and safety in all applications. ScaffteC Fittings are made with high-quality, drop-forged, galvanized components, equipped with Grade 8.8 stainless steel T-bolts for secure connections. All fittings meet European Standards EN12811 and EN74, as well as OSHA guidelines, guaranteeing reliable performance and compliance with international safety regulations.





# SCAFFOLDING RENTAL

## ScaffteC LVL & Timber Board

ScaffteC Scaffold Boards are made from high-quality European whitewood, 100% proof-tested to ensure safety and performance. These boards comply with European standards and OSHA guidelines, making them a reliable choice for scaffolding projects. All LVL (Laminated Veneer Lumber) and timber boards are manufactured to a standard size of 225mm in width and 38mm in depth, with lengths available from 0.5m to 3.9m to suit various construction needs.



## ScaffteC Steel Board

ScaffteC Steel Boards are constructed using 2mm thick, galvanized Grade S235 steel to ensure durability and reliability. These boards come in a standard size of 225mm in width and 38mm in depth, offering robust support for various scaffolding applications. Available in lengths ranging from 1m to 3.9m, ScaffteC Steel Boards are designed to meet diverse project requirements with safety and compliance.





# FORMWORK RENTAL

---

## ScaffteC Formwork - Cuplok & H20 Beam

The Cuplok System with H20 Beam Formwork Decking is a premier solution for constructing concrete floors, recognized for its simplicity, cost-effectiveness, and adaptability to various site conditions. The H20 beams are lightweight, making them easy to handle and install, while offering exceptional durability and high load-bearing capacity. Each beam's surface is protected with a waterproof, environmentally friendly impregnation, ensuring longevity and resistance to harsh conditions. This formwork system is designed to provide reliable performance across a range of construction projects.



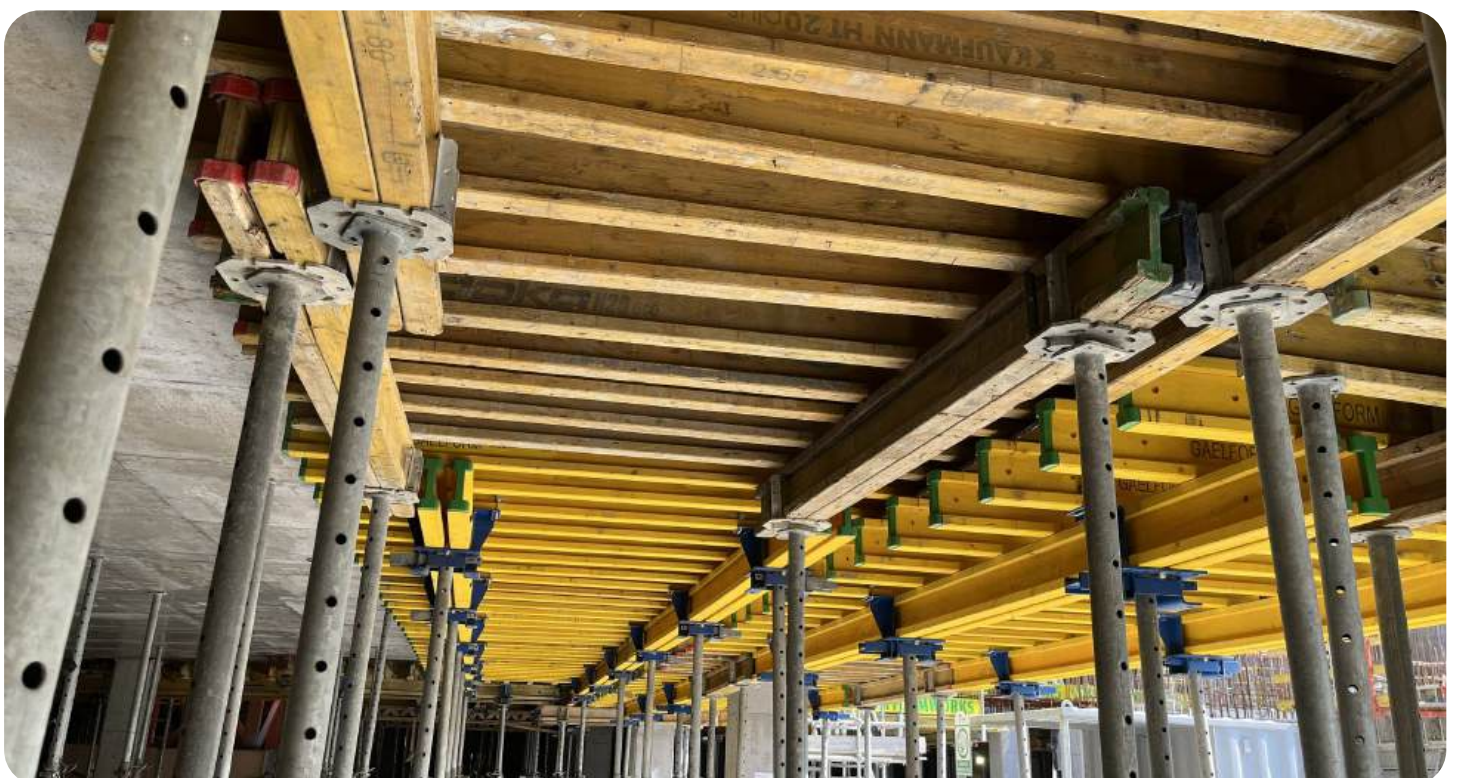


# FORMWORK RENTAL

---

## ScaffteC Formwork - Props & H20 Beam

ScaffteC Euro Props meet the rigorous EN 1065 standards, while our H20 Beams are designed in accordance with EN 13377 standards, ensuring high-quality and reliable performance. Our durable, easy-to-install decking systems are ideal for efficient concrete slab construction, providing robust solutions for various site needs. The Euro Props feature adjustable heights to suit different project requirements, adding versatility and practicality to the construction process. All components are manufactured in line with relevant industry standards to uphold safety, durability, and efficiency.





# CONTRACT SCAFFOLDING

---

## Erection, Dismantling Services as Contractor

ScaffteC project division provide a complete scaffolding service including supply, erection and dismantling. Offering a wealth of knowledge and experience we provide tailor made scaffolding solutions for Industrial / Commercial, Rail and Domestic scaffolding. ScaffteC is a trusted provider of high-quality scaffolding solutions, offering reliable and safe access structures for construction, renovation, and industrial projects. With a focus on safety, quality, and efficiency, we specialize in designing, supplying, and installing scaffolding systems tailored to meet the unique needs of each project. Our experienced team is dedicated to maintaining the highest standards of compliance and customer satisfaction, making us a preferred partner for projects of all sizes and complexities.



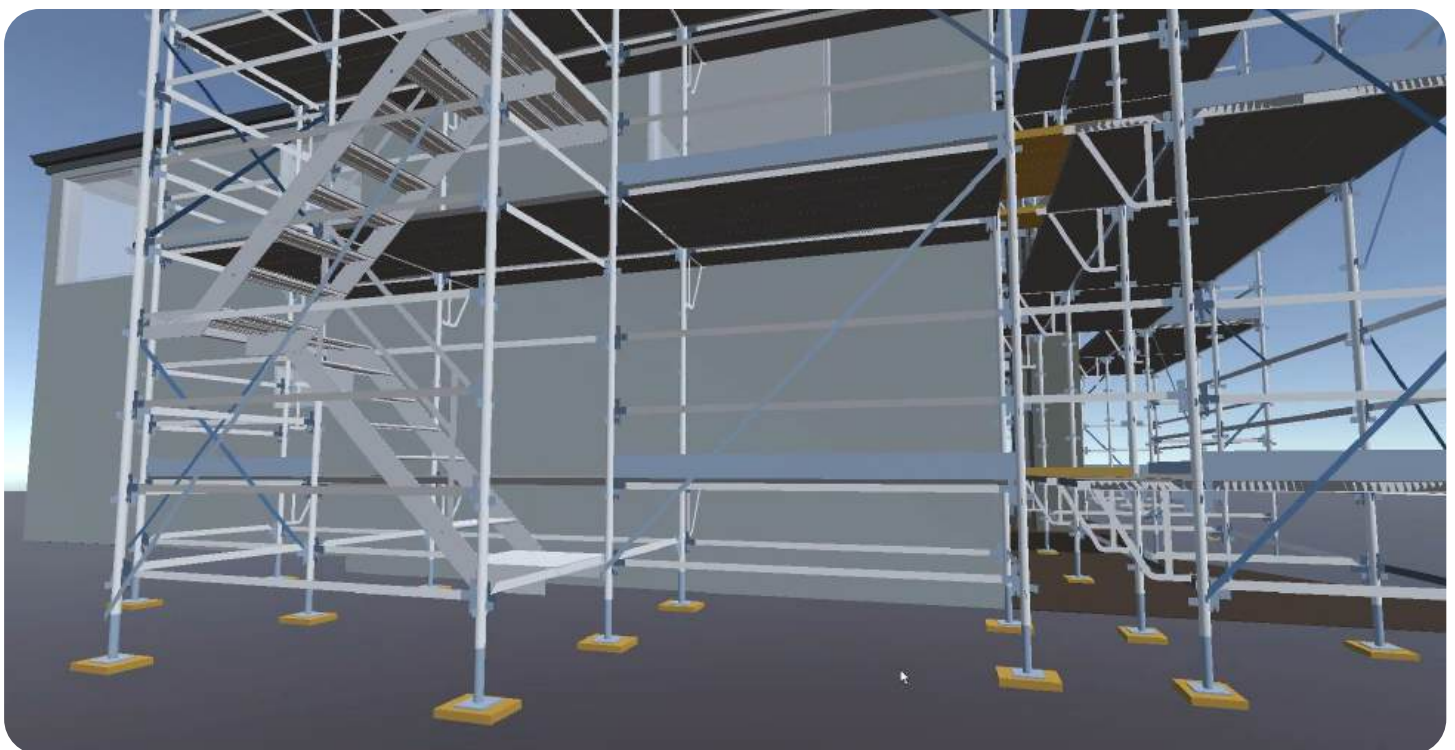
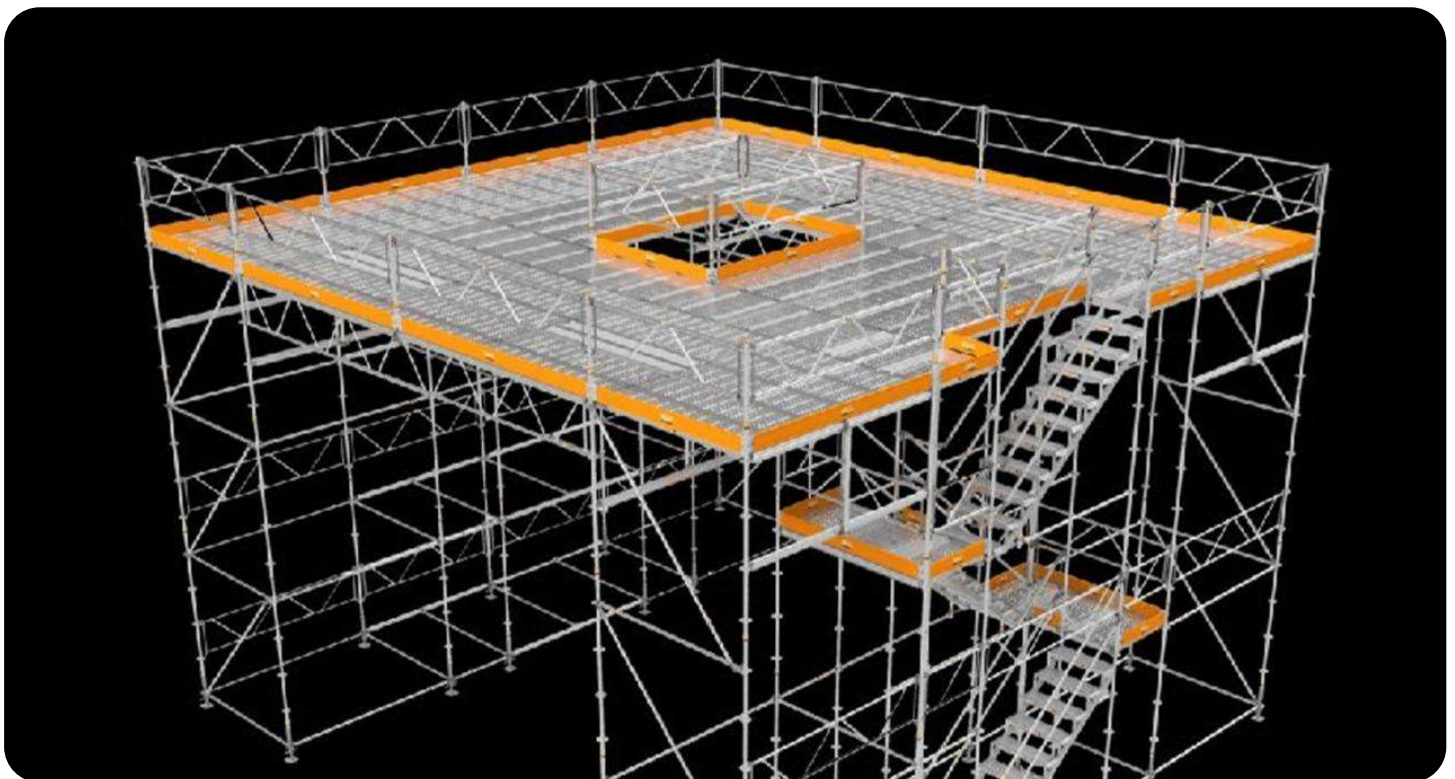


# ENGINEERING SERVICES

---

## Engineering Designs & Calculations

ScaffteC specializes in innovative and customized scaffolding design solutions for construction, industrial, and commercial projects. With a commitment to safety, precision, and efficiency, we deliver tailored scaffolding designs and calculations that optimize access, stability, and compliance for complex structures. Our experienced design team leverages advanced technology, softwares and industry expertise to create scaffolding layouts that meet the unique requirements of each project, ensuring seamless integration, safety, and functionality.





# PLANT & MACHINERY RENTAL

ScaffteC is a trusted provider of high quality plant and machinery rental services, catering to the construction, industrial, and infrastructure sectors. We offer a comprehensive fleet of modern, well-maintained equipment, including excavators, loaders, cranes, and more as detailed below, designed to meet the diverse needs of our clients. ScaffteC is your dependable partner for all plant and machinery requirements as follows :

- Air Compressor
- Cargo Container
- Welding Equipment
- Dehumidifier
- Material Hoise
- Mast Climbing Work Platform
- Scissor Lifts
- Boom Lifts
- Sweepers
- Skidsteer and Wheel Loaders
- Excavator Rollers
- Telescopic Handlers
- Cranes
- Forklift
- Tower Lights
- Generators
- Portable Cabins
- Ablution Cabins





## CONTACT US



### OMAN

M/s. Modern Channels Integrated Services LLC

CR Number : 1543144

Address : PB 2676, PC 130,  
Azaiba, Sultanate of Oman



[www.Scafftec.com](http://www.Scafftec.com)



[sales@Scafftec.com](mailto:sales@Scafftec.com)



+968 91232603



[scaff\\_tec](https://www.instagram.com/scaff_tec)



[Scafftec](https://www.linkedin.com/company/Scafftec)



[@Scafftec\\_](https://twitter.com/Scafftec)